



7/233 Cope Street Waterloo NSW

1 1

Located within a security complex, only seconds to beautiful Alexandria Park with CBD transport virtually at your doorstep, we offer this spacious one bedroom apartment. Positioned in one of Sydney's prime inner-city locations, and just footsteps to Waterloo Metro railway station, Green Square station, Danks Street cafes and Australian Technology Park within a brief walk.

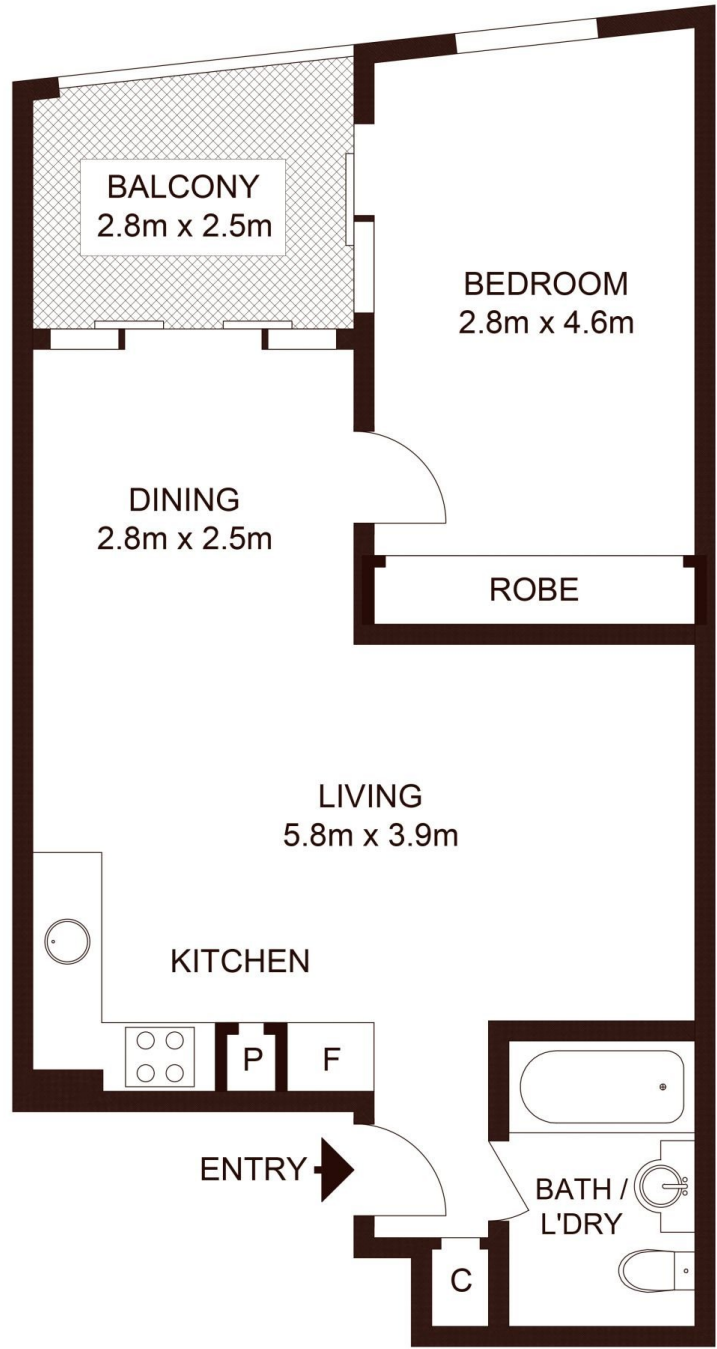
- Open plan living with tiled floors
- Double bedroom with built-ins, carpeted floor and balcony access
- Modern kitchen with stainless steel appliances
- Covered balcony perfect for entertaining
- Tiled bathroom with internal laundry
- Private well maintained communal garden area

Type : Apartment
Price : Auction Guide \$620,000
Building Size : 56 sqm
View : <https://www.silverco.com.au/sale/nsw/ea-stern-suburbs/waterloo/residential/apartment/8160469>



Mitchell Perry
02 9319 1666

[For full version visit the website](https://www.silverco.com.au)



7/233 Cope Street, WATERLOO

Not to scale • All measurements are approximate • Drawn for marketing purposes only • Floorplan by © Xorix Media

