



Shop 1/29 Botany Road Waterloo NSW

For lease is this prime kerbside shop offering approx. 120sqm of adaptable work space. Conveniently located 500m South of Redfern Station and within seconds to the brand new Waterloo Metro and many cafes, restaurants and retail shops.

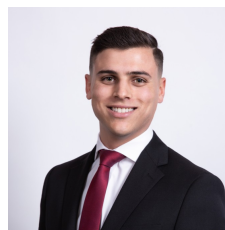
This commercial space features:

- approx. 120sqm of adaptable workspace
- Glass shop front allowing for great business signage
- Private lavatory facilities

NOTES: Property can be equipped with grease trap upon request.

You don't want to miss out on this opportunity. Call Mitchell Perry - 0413 263 444 to arrange an inspection.

Price : Contact Agent
Building Size : 120 sqm
View : <https://www.silverco.com.au/lease/nsw/eastern-suburbs/waterloo/commercial/retail/8042079>



Mitchell Perry
02 9319 1666