



808C/8 Bourke Street Mascot NSW

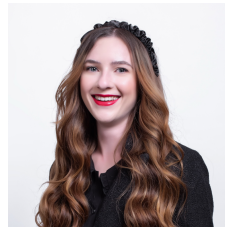
2 2 2

Located on level 8 with stunning area views, this spacious 2-bedroom apartment offers exceptional lifestyle convenience. With a Woolworths, restaurants, Mascot train station and bus stops located at your doorstep. This superb apartment boasts luxurious finishes with seamless open plan living areas.

View : <https://www.silverco.com.au/lease/nsw/eastern-suburbs/mascot/residential/unit/8022026>

Additional features include:

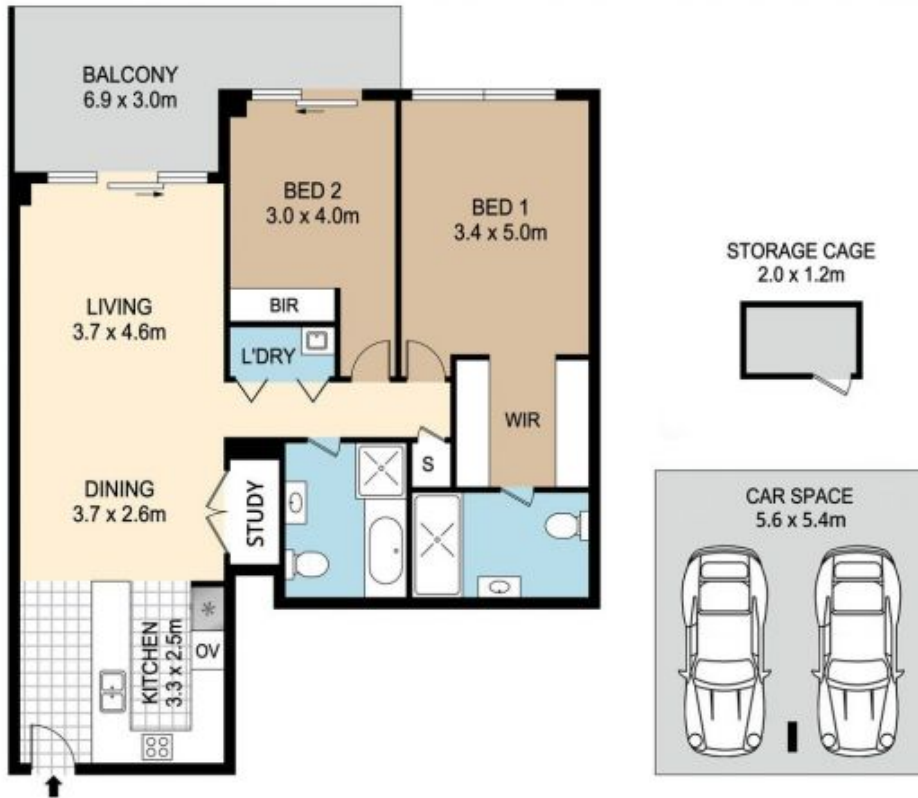
- 2 Luxurious bedrooms both with mirrored built-ins.
- Main bedroom with walk in robe
- Internal laundry with dryer
- Open plan living & dining with separate study nook
- Large kitchen with stainless steel appliances including microwave & dishwasher.
- Ducted air conditioning throughout
- Intercom
- 2 basement parking spaces



Victoria Wilson
02 9319 1666



Renae Perry
02 9319 1666



808C/8 BOURKE STREET, MASCOT



DISCLAIMER : PLANS SHOWN ARE FOR MARKETING PURPOSES ONLY. ALL DIMENSIONS ARE APPROXIMATE AND NOT TO SCALE. THEY ARE SUBJECT TO ERRORS AND INACCURACIES AND NO LIABILITY WILL BE ACCEPTED. INTERESTED PARTIES SHOULD MAKE THEIR OWN INQUIRES.