



17/11 Julian Close Banksmeadow NSW

2 🚗

- Total size: 92m2 + parking
- High Clearance w/ automatic garage door
- Private air conditioned office

Silver & Co are excited to bring 17/11 Jullian Close, Banksmeadow to the market for sale/lease.

For sale/lease is this superb high clearance warehouse with a bright and airy office area. This near new 92m2 space is conveniently located near Port Botany, Sydney Airport and the Eastern Distributor.

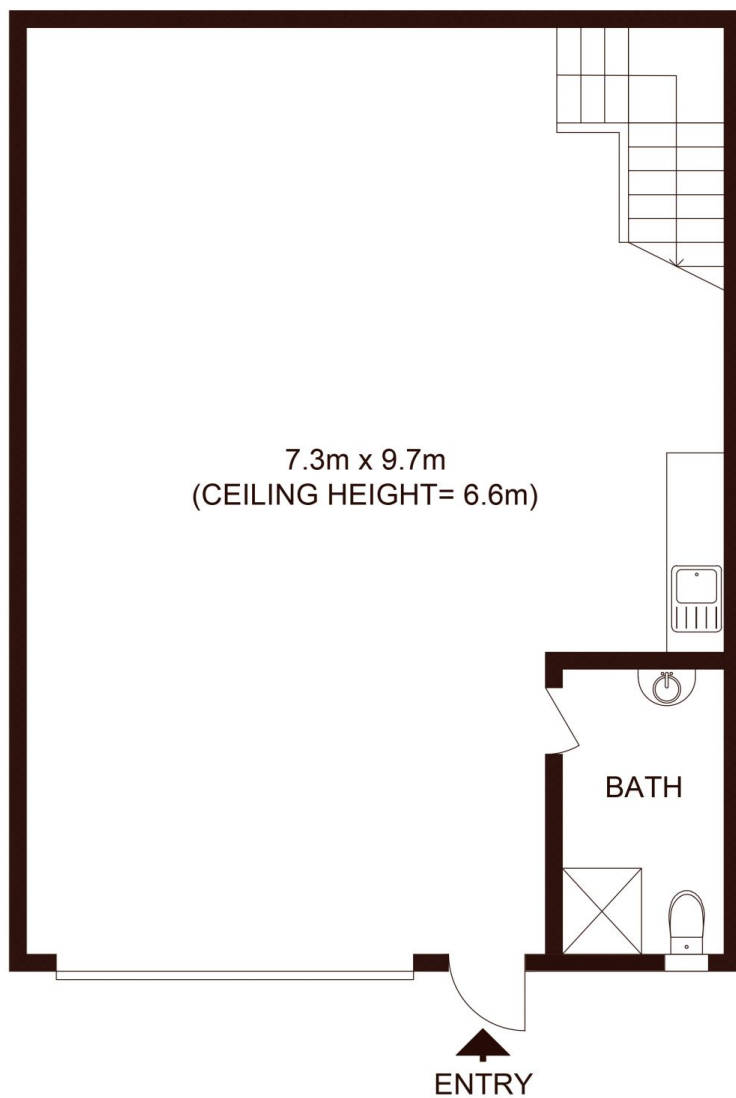
Additional features include:

- After hours access available
- 2 car spaces
- Warehouse: 70m2
- Office: 22m2

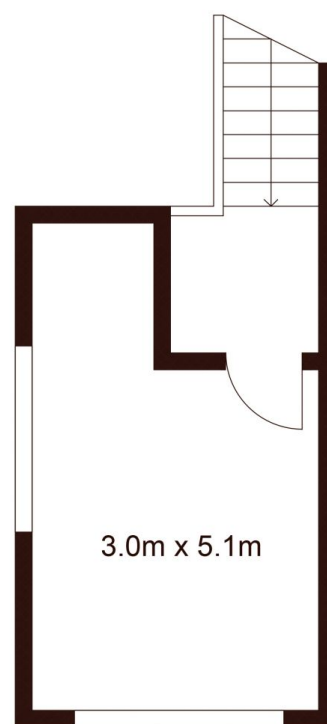
Building Size : 92 sqm
View : <https://www.silverco.com.au/sale/nsw/eastern-suburbs/banksmeadow/commercial/industrial/8012004>



Mitchell Perry
02 9319 1666



GROUND FLOOR



FIRST FLOOR

17/11 Jullian Close, BANKSMEADOW

Not to scale • All measurements are approximate • Drawn for marketing purposes only • Floorplan by © Xorix Media

