



C2/8 Allen Street Waterloo NSW

- Total size approx. 58m²
- Zoning: MU1 Mixed Use
- Private setting

Silver & Co are delighted to present the superb, turn key office/studio space in a private garden setting, perfect for professionals seeking a serene yet vibrant work place.

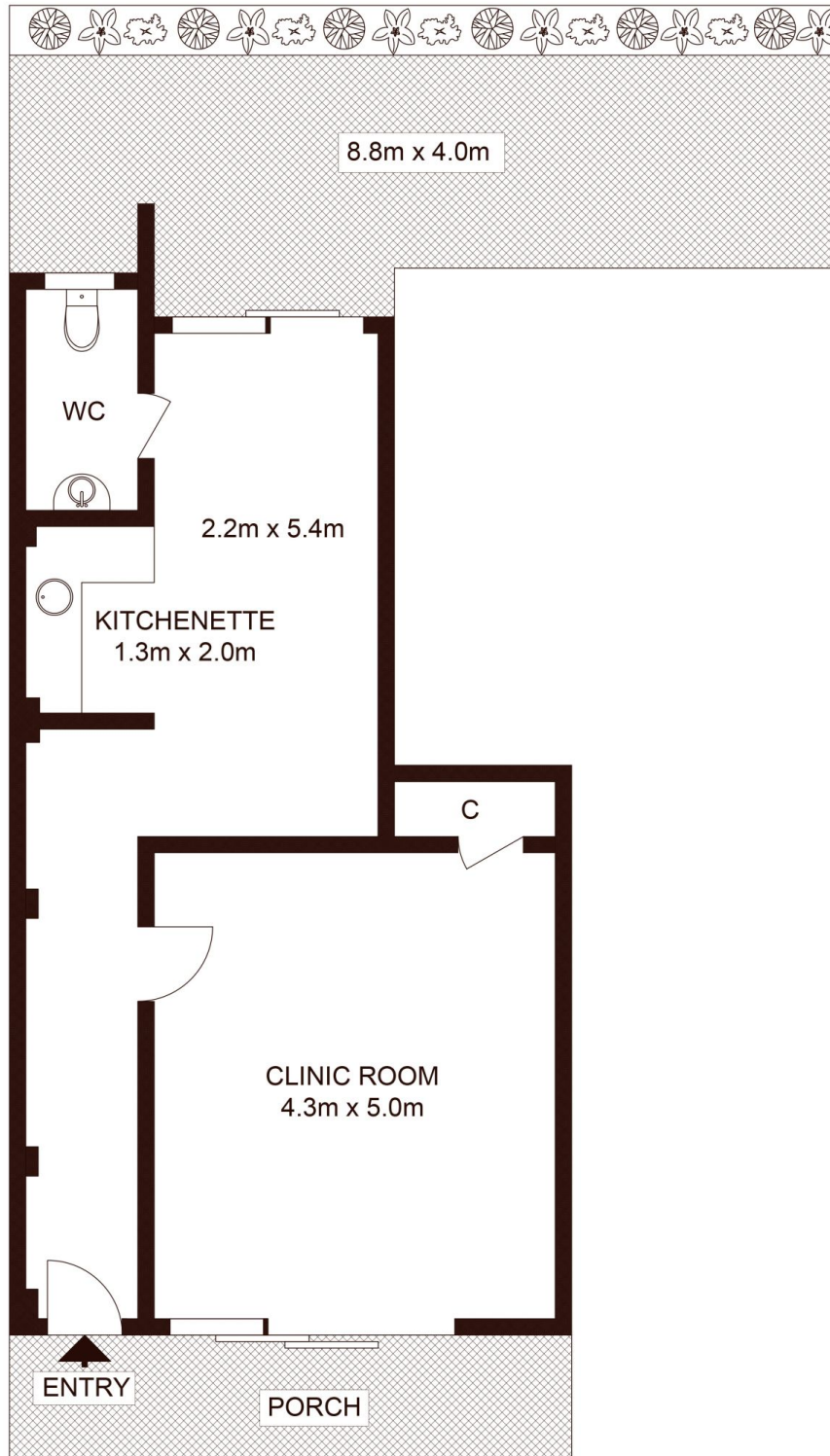
For sale this suburb office is part of a 14-year-old development with timber floors, private clinic room, storage, kitchenette, breakout room and is equipped with a split system air conditioner. Current approved use - Medical Centre (Osteopath).

The new Sydney Metro Station Waterloo is an 8 minute walk. It forms part of the North West and Bankstown line. Waterloo Station is 2 minutes to Central Station and Green

| | |
|----------------------|---|
| Price | : Contact Agent |
| Building Size | : 58 sqm |
| Land Size | : 88 sqm |
| View | : https://www.silverco.com.au/sale/nsw/ea-stern-suburbs/waterloo/commercial/healthcare/8001126 |



Mitchell Perry
02 9319 1666



C2/8 Allen Street, WATERLOO

Not to scale • All measurements are approximate • Drawn for marketing purposes only • Floorplan by © Xorix Media

